

2014 – 2015 OPENING SCHOOL REPORT

PART 1 - SEPTEMBER 30 ENROLLMENT
PART 2 - SEPTEMBER 30 STAFFING



Carrie Levy
Director, Research, Evaluation & Assessment
Midge Stocker
Manager, Enterprise Applications

October 2014

OPENING SCHOOL REPORT
TABLE OF CONTENTS

Executive Summary 1

PART 1 SEPTEMBER 30, 2014 ENROLLMENT

A – Official District/School Enrollment as of September 30..... 4
B – Official District/School Enrollment with Reclassified Totals as of September 30 5
C – Enrollment by Grade and Gender as of September 30 6
D – Special Education Students Attending Private and Public Facilities 7
E – District 202 Residents Attending Non-Public Schools..... 8

PART 2 SEPTEMBER 30, 2014 ENROLLMENT BY DEPARTMENT

A – Class Enrollment by Department as of September 30 9
B – Special Courses and Programs 10
C – Number of Sections by Department of as of September 30 11
D – Average Class Size as of September 30 12

Executive Summary

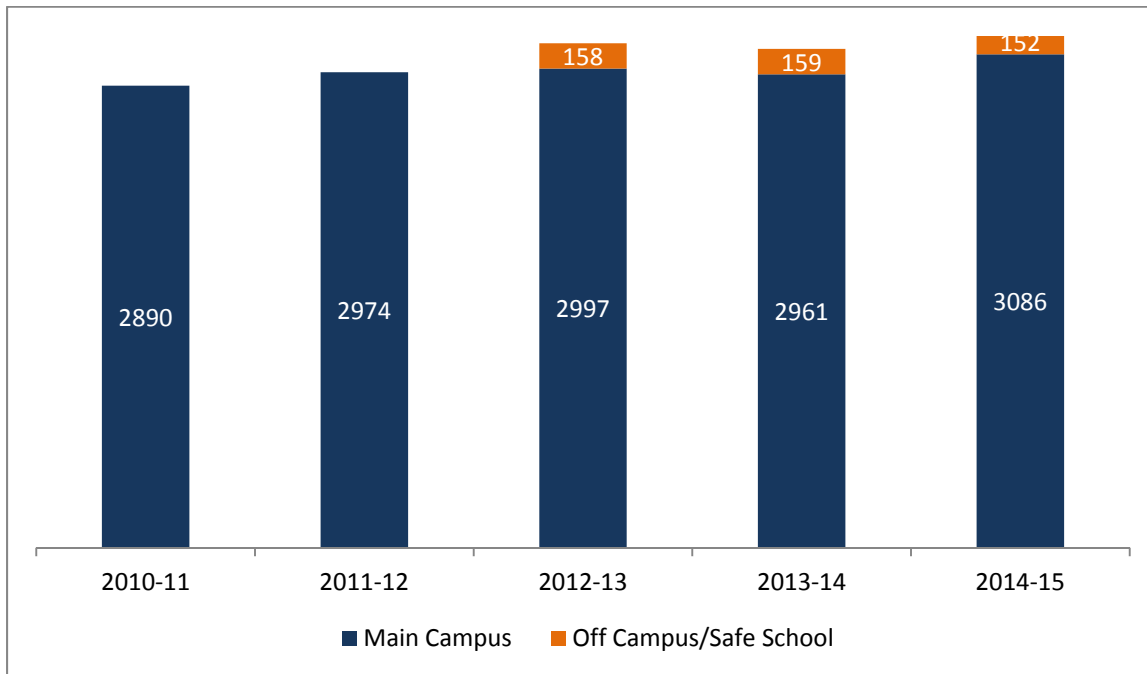
Introduction

The following report presents the official school enrollment as of September 30, 2014. Enrollment figures are disaggregated by race/ethnicity and gender. The report also includes information on special education students attending private and public facilities, District 202 residents attending non-public schools, class enrollment by department, number of class sections by department, average class size by department, and special courses and programs.

Total Enrollment

The 2014-2015 total enrollment (Part 1A) of 3238 is the highest enrollment in the last five years. The chart below shows the enrollment changes over the last five years.

Total District Enrollment: 2010-11 to 2014-15



Beginning in 2012-2013, official district/school enrollment numbers (Part 1A, 1B, and 1C) included off-campus placement and safe school/ombudsman students. Before 2012-2013, these students were excluded from the enrollment counts. First time grade 9 enrollment at the main campus in 2014-2015 is at its highest (800) since 2004-2005 (Part 1B).

Enrollment by Department

The English/reading, history/social sciences, mathematics, physical education and wellness, and special education departments increased enrollment in 2014-15 (Part 2A). The history/social sciences department increased for the fourth year in a row, and the physical education and wellness department increased for the third year in a row.

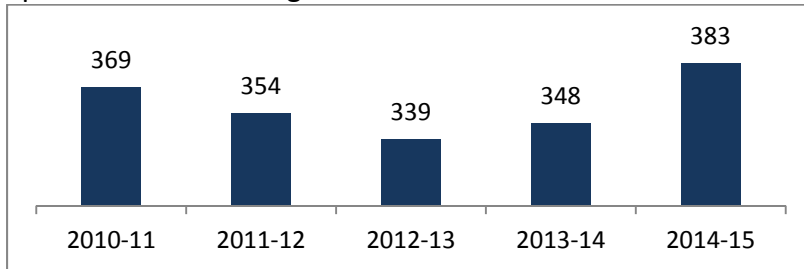
Enrollment in Non-Public Schools

In 2014-2015, the number of District 202 residents attending non-public schools increased to 304 from 267 in 2013-2014 (Part 1E). Most of this increase is attributed to higher enrollment at Loyola Academy and North Shore Country Day School.

Enrollment in Special Education

The number of students enrolled in the special education program increased from 348 in 2013-2014 to 383 in 2014-2015.

Special Education Program Enrollment



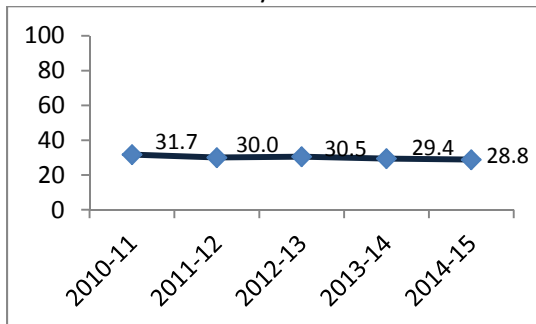
Enrollment by Race/Ethnicity (Main Campus)

The following graphs present enrollment by race/ethnicity at the main campus over the past five years.

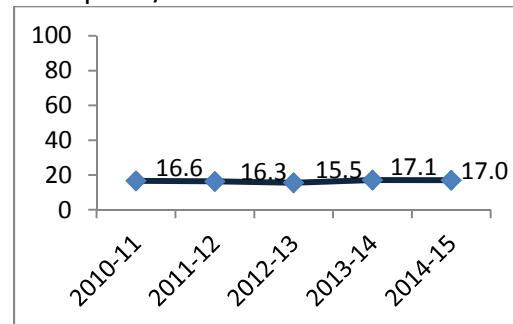
The percentage of African American/Black students at the main campus is down to 28.8% in 2014-2015 from 29.4% in 2013-2014. This is the lowest percent in five years. The proportion of African American/Black students has seen a steady decline since 1994-1995.

The proportion of Hispanic/Latino students at the main campus remained constant from the prior year; 17.0% in 2014-2015 compared to 17.1% in 2013-2014, which is the second highest in ETHS history.

% African American/Black Enrollment

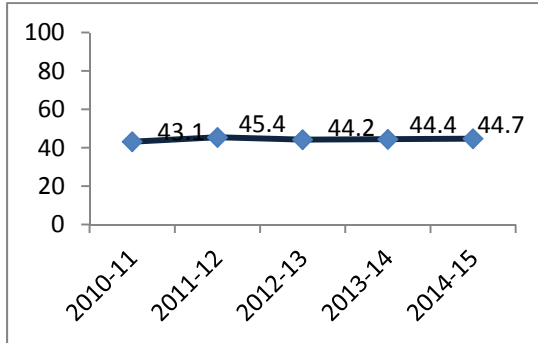


% Hispanic/Latino Enrollment



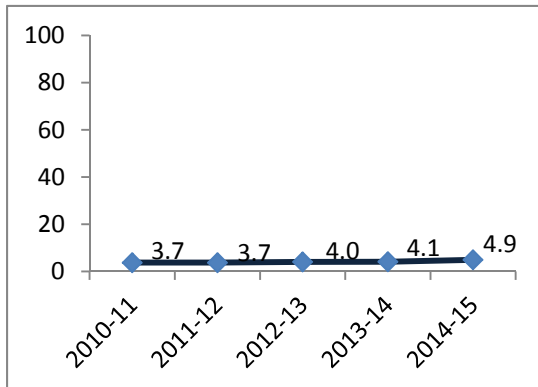
Since 2012-2013, the percentage of White students at the main campus has remained relatively constant and is 44.7% in 2014-2015.

% White Enrollment

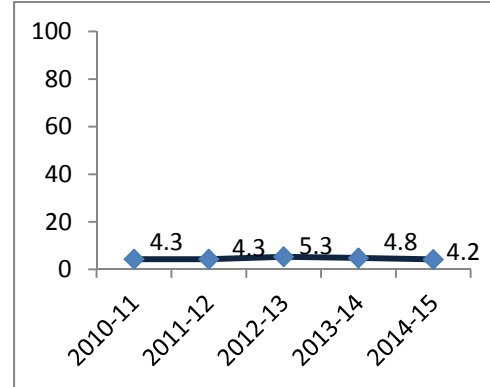


The percentage of Asian students at the main campus has increased slightly in 2014-15 to 4.9% and the percentage of students identified as Two or More Races has remained relatively constant over the past five years.

% Asian Enrollment



% Two or More Races Enrollment



PART 1A
Official District/School Enrollment as of September 30

Grade/Ethnicity	2010-11		2011-12		2012-13*		2013-14*		2014-15*	
	Total n	% of Ttl	Total n	% of Ttl	Total n	% of Ttl	Total n	% of Ttl	Total n	% of Ttl
Grade 9										
African Amer./Black	232	29.9	234	29.5	284	33.3	265	32.2	255	29.2
American Indian	2	0.3	1	0.1	4	0.5	3	.04	3	0.3
Asian	21	2.7	33	4.2	31	3.6	39	4.7	47	5.4
Hispanic/Latino	153	19.7	144	18.2	144	16.9	151	18.4	154	17.6
Native Hawaiian	0	0.0	0	0.0	3	0.4	0	0.0	2	0.2
Two or More Races	46	5.9	37	4.7	52	6.1	22	2.7	34	3.9
White	322	41.5	343	43.3	336	39.3	342	41.6	379	43.4
Total	776		792		854		822		874	
Grade 10										
African Amer./Black	246	31.8	224	29.7	191	26.4	224	29.8	237	31.2
American Indian	8	1.0	3	0.4	2	0.3	3	0.4	2	0.3
Asian	35	4.5	22	2.9	33	4.6	30	4.0	36	4.7
Hispanic/Latino	113	14.6	131	17.4	125	17.3	128	17.0	136	17.9
Native Hawaiian	2	0.3	0	0.0	0	0.0	1	0.1	0	0.0
Two or More Races	37	4.8	38	5.0	34	4.7	52	6.9	17	2.2
White	333	43.0	335	44.5	338	46.7	313	41.7	332	43.7
Total	774		753		723		751		760	
Grade 11										
African Amer./Black	233	32.3	222	30.3	224	31.5	189	26.3	217	28.7
American Indian	1	0.1	5	0.7	0	0.0	1	0.1	4	0.5
Asian	22	3.0	34	4.6	21	3.0	30	4.2	36	4.8
Hispanic/Latino	119	16.5	102	13.9	108	15.2	123	17.1	126	16.7
Native Hawaiian	0	0.0	1	0.1	0	0.0	0	0.0	1	0.1
Two or More Races	19	2.6	33	4.5	38	5.4	31	4.3	48	6.4
White	328	45.4	335	45.8	319	44.9	346	48.1	323	42.8
Total	722		732		710		720		755	
Grade 12										
African Amer./Black	206	33.3	212	30.4	214	30.1	192	28.7	180	25.8
American Indian	3	0.5	0	0.0	7	1.0	1	0.1	1	0.1
Asian	29	4.7	22	3.2	34	4.8	21	3.1	31	4.4
Hispanic/Latino	95	15.4	107	15.4	87	12.3	103	15.4	110	15.8
Native Hawaiian	0	0.0	0	0.0	1	0.1	1	0.1	0	0.0
Two or More Races	21	3.4	20	2.9	35	4.9	36	5.4	31	4.4
White	264	42.7	336	48.2	332	46.8	314	47.0	344	49.4
Total	618		697		710		668		697	
Off Campus/Safe School										
African Amer./Black					97	61.4	94	59.1	88	57.9
American Indian					2	1.2	2	1.3	1	0.7
Asian					2	1.2	2	1.3	4	2.6
Hispanic/Latino					22	13.9	14	8.8	13	8.6
Native Hawaiian					0	0.0	1	0.6	1	0.7
Two or More Races					5	3.1	8	5.0	8	5.3
White					30	19.0	38	23.9	37	24.3
Total	NA		NA		158		159		152	
Total ETHS										
African Amer./Black	917	31.7	892	30.0	1010	32.0	964	30.9	977	30.2
American Indian	14	0.5	9	0.3	15	0.5	10	0.3	11	0.3
Asian	107	3.7	111	3.7	121	3.8	122	3.9	154	4.8
Hispanic/Latino	480	16.6	484	16.3	486	15.4	519	16.6	539	16.6
Native Hawaiian	2	0.1	1	0.0	4	0.1	3	0.1	4	0.1
Two or More Races	123	4.3	128	4.3	164	5.2	149	4.8	138	4.3
White	1247	43.1	1349	45.4	1355	42.9	1353	43.4	1415	43.7
Total	2890		2974		3155		3120		3238	

*Beginning in 2012-13, total district enrollment includes all students enrolled at the Main Campus, Off Campus Placement, and Safe School/Ombudsman. Prior year enrollment only included students at the Main Campus.

PART 1B

Official District/School Enrollment with Reclassified Totals as of September 30

Grade/Ethnicity	2010-11		2011-12		2012-13*		2013-14*		2014-15*	
	Total n	Recl.**	Total n	Recl.	Total n	Recl.	Total n	Recl.	Total n	Recl.
Grade 9										
African Amer./Black	232	29	234	34	284	40	265	43	255	40
American Indian	2	1	1	0	4	0	3	1	3	1
Asian	21	0	33	0	31	0	39	2	47	1
Hispanic/Latino	153	17	144	19	144	20	151	16	154	20
Native Hawaiian	0	0	0	0	3	0	0	0	2	0
Two or More Races	46	1	37	4	52	5	22	2	34	1
White	322	4	343	4	336	10	342	6	379	11
Total	776	52	792	61	854	75	822	70	874	74
Grade 10										
African Amer./Black	246	50	224	37	191	21	224	29	237	37
American Indian	8	1	3	2	2	1	3	0	2	0
Asian	35	0	22	1	33	0	30	0	36	1
Hispanic/Latino	113	22	131	21	125	18	128	17	136	18
Native Hawaiian	2	0	0	0	0	0	1	0	0	0
Two or More Races	37	4	38	0	34	3	52	2	17	1
White	333	10	335	11	338	7	313	3	332	5
Total	774	87	753	72	723	50	751	51	760	62
Grade 11										
African Amer./Black	233	39	222	37	224	30	189	27	217	29
American Indian	1	1	5	0	0	0	1	0	4	0
Asian	22	2	34	0	21	0	30	0	36	1
Hispanic/Latino	119	16	102	15	108	10	123	16	126	11
Native Hawaiian	0	0	1	0	0	0	0	0	1	0
Two or More Races	19	1	33	0	38	0	31	1	48	2
White	328	3	335	10	319	8	346	7	323	8
Total	722	62	732	62	710	48	720	51	755	51
Grade 12										
African Amer./Black	206	13	212	2	214	5	192	1	180	7
American Indian	3	0	0	0	7	0	1	0	1	0
Asian	29	0	22	1	34	0	21	0	31	1
Hispanic/Latino	95	4	107	0	87	0	103	0	110	1
Native Hawaiian	0	0	0	0	1	0	1	0	0	0
Two or More Races	21	1	20	0	35	0	36	0	31	1
White	264	6	336	1	332	1	314	0	344	7
Total	618	24	697	4	710	6	668	1	697	17
Off Campus/Safe School										
African Amer./Black					97	41	94	34	88	35
American Indian					2	1	2	0	1	0
Asian					2	0	2	0	4	0
Hispanic/Latino					22	14	14	7	13	7
Native Hawaiian					0	0	1	1	1	1
Two or More Races					5	0	8	3	8	4
White					30	6	38	8	37	8
Total		NA		NA	158	62	159	53	152	55
Total ETHS										
African Amer./Black	917	131	892	110	1010	137	964	134	977	141
American Indian	14	3	9	2	15	2	10	1	11	1
Asian	107	2	111	2	121	0	122	2	154	3
Hispanic/Latino	480	59	484	55	486	62	519	56	539	56
Native Hawaiian	2	0	1	0	4	0	3	1	4	1
Two or More Races	123	7	128	4	164	8	149	8	138	8
White	1247	23	1349	26	1355	32	1353	24	1415	32
Total	2890	225	2974	199	3155	241	3120	226	3238	242

*Beginning in 2012-13, total district enrollment includes all students enrolled at the Main Campus, Off Campus Placement, and Safe School/Ombudsman. Prior year enrollment only included students at the Main Campus. **A student is promoted to the next grade level if they earn a minimum of 12 credits a year. Students who do not earn 12 credits are considered reclassified and are not promoted to the next grade level.

PART 1C
Enrollment by Grade and Gender as of September 30

Grade/Ethnicity	Female	Male	Total
Grade 9			
African Amer./Black	123	132	255
American Indian	3	0	3
Asian	21	26	47
Hispanic/Latino	78	76	154
Native Hawaiian	1	1	2
Two or More Races	11	23	34
White	170	209	379
Total	407	467	874
Grade 10			
African Amer./Black	112	125	237
American Indian	0	2	2
Asian	21	15	36
Hispanic/Latino	65	71	136
Native Hawaiian	0	0	0
Two or More Races	12	5	17
White	183	149	332
Total	393	367	760
Grade 11			
African Amer./Black	106	111	217
American Indian	1	3	4
Asian	21	15	36
Hispanic/Latino	56	70	126
Native Hawaiian	1	0	1
Two or More Races	25	23	48
White	164	159	323
Total	374	381	755
Grade 12			
African Amer./Black	91	89	180
American Indian	1	0	1
Asian	18	13	31
Hispanic/Latino	55	55	110
Native Hawaiian	0	0	0
Two or More Races	15	16	31
White	164	180	344
Total	344	353	697
Off Campus/Safe School			
African Amer./Black	39	49	88
American Indian	1	0	1
Asian	0	4	4
Hispanic/Latino	8	5	13
Native Hawaiian	0	1	1
Two or More Races	4	4	8
White	12	25	37
Total	64	88	152
Total ETHS			
African Amer./Black	471	506	977
American Indian	6	5	11
Asian	81	73	154
Hispanic/Latino	262	277	539
Native Hawaiian	2	2	4
Two or More Races	67	71	138
White	693	722	1415
Total	1582	1656	3238

Note: Total district enrollment for 2014-15 includes all students enrolled at the Main Campus, Off Campus Placement, and Safe School/Ombudsman. Prior year enrollment only included students at the Main Campus.

PART 1D
Special Education Students Attending Private & Public Facilities

The information included here is extracted from the annual *State Aid Entitlement Report* prepared by the Special Education Department each summer for the preceding school year.

Unduplicated Number of Students Attending Private and Public Facilities for One or More Days

PRIVATE/ PUBLIC	2010-11		2011-12		2012-2013		2013-14		2014-15	
	# of Students	# of Facilities	# of Students	# of Facilities	# of Students	# of Facilities	# of Students	# of Facilities	# of Students	# of Facilities
Private	89	30	84	26	104	28	107	31	85	27
Public	43	3	42	4	42	3	36	2	34	3
TOTALS	132	33	126	30	146	31	143	33	119	30

PART 1E
District 202 Residents Attending Non-Public Schools

Each Spring, for Title I purposes the non-public secondary schools in the area provide District 202 with the number of District 202 residents attending the institution.

SCHOOL	2009-10	2010-11	2011-12	2012-13	2013-14
Francis Parker	3	1	2	9	7
Ida Crown School	56	56*	31	39	24
Loyola Academy	159	145	144	132	147
North Shore Country Day	22	23	21	27	66
Notre Dame Academy	14	15	12	14	8
Regina Dominican	21	8	18	16	18
Roycemore	16	14	23	28	31
St. Scholastica	4	6	**	**	**
U of C Lab School	4	4	3	2	3
TOTALS	299	272	254	267	304

Ida Crown did not provide enrollment data for the 2011 school year. Fifty-six (56) is an estimate based upon the prior year's attendance.

** St. Scholastica closed after the 2010-2011 school year.

PART 2A
Class Enrollment by Department as of September 30

DEPARTMENT	2010-11	2011-12	2012-13	2013-14*	2014-15
Career & Technical Education	1165	1306	1396	1245	1238
Business Education	216	204	270	274	371
Human Services	320	422	474	443	311
Industrial Technology	505	551	551	382	432
Internship	124	129	101	146	124
English/Reading**	2926	2981	3003	2967	3090
English	2805	2887	2906	2869	2984
Reading	121	94	97	98	106
Fine Arts	1095	1115	1174	1245	1215
Art	503	486	577	702	680
Music	429	442	397	419	429
Speech Arts	163	187	200	124	106
History/Social Sciences	2653	2691	2852	2885	3006
Mathematics***	2815	2853	2920	2861[§]	3286
Physical Education and Wellness	2795	2918	2885	2912	3036
Physical Education	2480	2584	2559	2566	2696
Wellness Education	315	334	326	346	340
Science****	2430	2438	2439	2434	2556
Special Education	1023	978	927	1019	1130
World Languages	2152	2173	2217	2267	2254
Bilingual Program	71	69	65	60	87
TOTALS[†]	19125	19522	19878	19895	20898

Starting with the 2013-14 reporting, to report courses based on the department in which they are housed and sectioned the following courses were moved: Broadcast Media was moved from Fine Arts/Speech to CTE/Business; Graphic Design was moved from CTE/Industrial Tech to Fine Arts/Art; and Debate was moved from Fine Arts/Speech to History/Social Sciences.

** Does not reflect students receiving English credit in programs such as Alternative School, ISEP, Hearing Impaired, Bilingual, etc.

*** Starting with the 2014-15 reporting, double-period math enrollees are counted for two periods. Prior to 2014-15 double-period math enrollees were counted for only one period.

**** Double-period science enrollees are counted for only one period.

† Independent Study courses are excluded from these totals.

§ Includes 8th Grade Geometry Honors classes taught at ETHS.

PART 2B
Special Courses and Programs

Below is information on the number of unique students in special education and the bilingual program, and the number of enrollments (enrollees). Students are enrolled in multiple courses.

PROGRAM	2010-11	2011-12	2012-13	2013-14	2014-15
Bilingual Program* - Enrollees	71	69	65	60	87
Bilingual Program* - # Students	28	44	29	30	32
Special Education - Enrollees	1023	978	927	1019	1130
Special Education - # Students	369	354	339	348	383

* Bilingual Program as counted here is courses in English as a Second Language, Bilingual Support, co-taught Biology, and World History Supports.

PART 2C
Number of Sections by Department as of September 30

DEPARTMENT*	2010-11	2011-12	2012-13	2013-14**	2014-15
Career & Technical Education	58	63	67	62	61
Business Education	12	11	13	15	19
Human Services	19	22	25	25	19
Industrial Technology	27	30	29	22	23
English	131	135	135	139	142
Fine Arts	31	32	36	42	40
Art	23	23	27	35	35
Speech Arts	8	9	9	7	5
History/Social Sciences	111	120 [†]	128	123	133
Mathematics***	119	121	125	123 [‡]	163
Physical Education and Wellness	102	105	103	109	114
Physical Education	90	93	90	95	99
Wellness Education	12	12	13	14	15
Science	108	110	109	113	118
World Languages	99	106 [§]	106	111	112
Total	759	792	809	822	883

* Internship, Music, Reading, Special Education, and Special Courses/Programs consist of variable meeting times and section sizes; they do not fit the normal sectioning pattern.

** Starting with the 2013-14 reporting, to report courses based on the department in which they are housed and sectioned the following courses were moved: Broadcast Media was moved from Fine Arts/Speech to CTE/Business; Graphic Design was moved from CTE/Industrial Tech to Fine Arts/Art; and Debate was moved from Fine Arts/Speech to History/Social Sciences.

*** Starting with the 2014-15 reporting, double-period math enrollees are counted for two sections. Prior to 2014-15 double-period math enrollees were counted for only one section.

[†]The history increase reflects an increased number of sections of Freshman Humanities to keep seat counts low.

[‡]Includes 8th Grade Geometry Honors classes taught at ETHS.

[§]The world languages increase in 2011-12 reflects changes in the handling of previously combined sections and addition of one new course.

PART 2D
Average Class Size as of September 30

DEPARTMENT*	2010-11	2011-12	2012-13	2013-14**	2014-15
Career & Technical Education	20	19	20	18	18
Business Education	18	19	21	18	20
Human Services	17	19	19	18	16
Industrial Technology	19	18	19	17	19
English	21	21	22	21	21
Fine Arts	21	21	22	20	20
Art	22	21	21	20	19
Speech Arts	20	21	22	18	21
History/Social Sciences	24	22	22	23	23
Mathematics	24	24	23	23 [†]	20
Physical Education and Wellness	29	28	27	27	27
Physical Education	31	28	28	27	27
Wellness Education	26	28	25	25	23
Science	23	22	22	22	22
World Languages	22	21	21	20	20

* Internship, Music, Reading, Special Education, and Special Courses/Programs consist of variable meeting times and section sizes; they do not fit the normal sectioning pattern.

** Starting with the 2013-14 reporting, to report courses based on the department in which they are housed and sectioned the following courses were moved: Broadcast Media was moved from Fine Arts/Speech to CTE/Business; Graphic Design was moved from CTE/Industrial Tech to Fine Arts/Art; and Debate was moved from Fine Arts/Speech to History/Social Sciences.

† Includes 8th Grade Geometry Honors classes taught at ETHS.